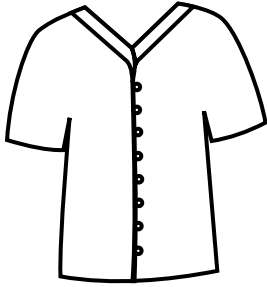
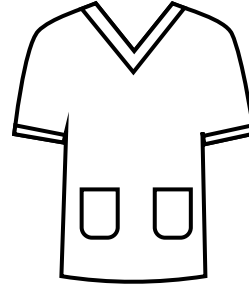


STAFF UNIFORM

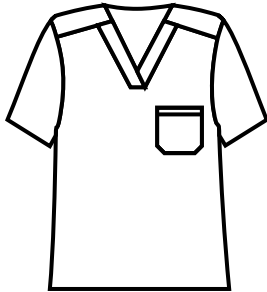
Different staff have different coloured uniforms to show their role in the hospital.
Colour each uniform correctly to show their role at the hospital.



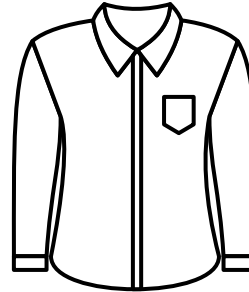
Cleaner
- Light Green



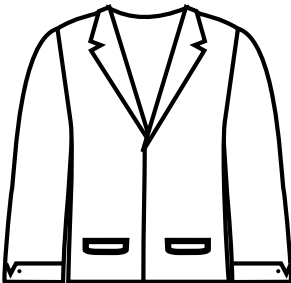
Surgeon
- Light Blue



Pediatrician
- Dark Green



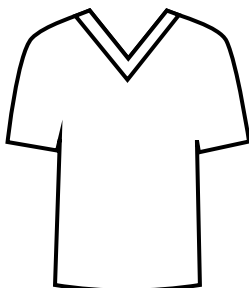
Paramedic
- Dark Blue



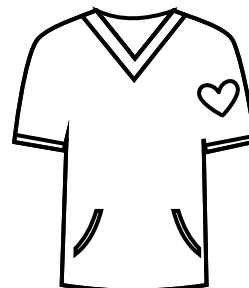
Oncologist
- Grey



Porter
- Light Green



Radiographer
- Light Blue



Nurse
- Dark Blue

Early Years Learning Framework: Outcome 5 - Begin to sort attributes of objects in the natural world.